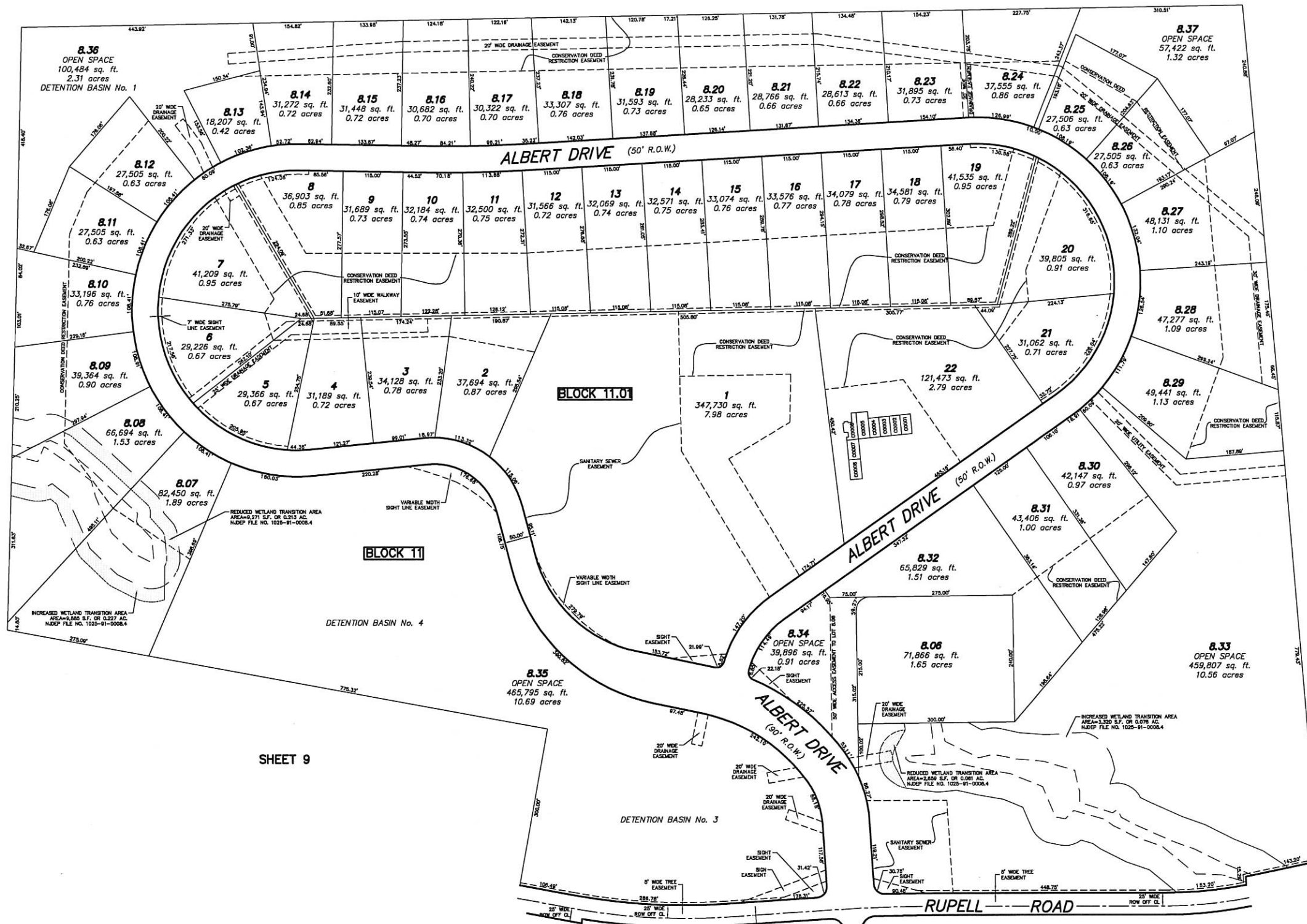


REVISIONS		
DATE	NAME	LIC. NO.
DEC. 2015	CARL M. HERRMAN	42271

SHEET 7

SHEET 9

SHEET 9



NOTE: TO SHOW CONDITIONS AS OF DEC. 2015.

TAX MAP
 UNION TOWNSHIP
 HUNTERDON COUNTY, NEW JERSEY
 SCALE 1"=100' PREPARED BY MAY 2006
 ROBERT C. BOGART, P.E. & L.S. 15474
 MASER CONSULTING P.A.

53 FRONTAGE ROAD, SUITE 129, CLINTON, NEW JERSEY 08809