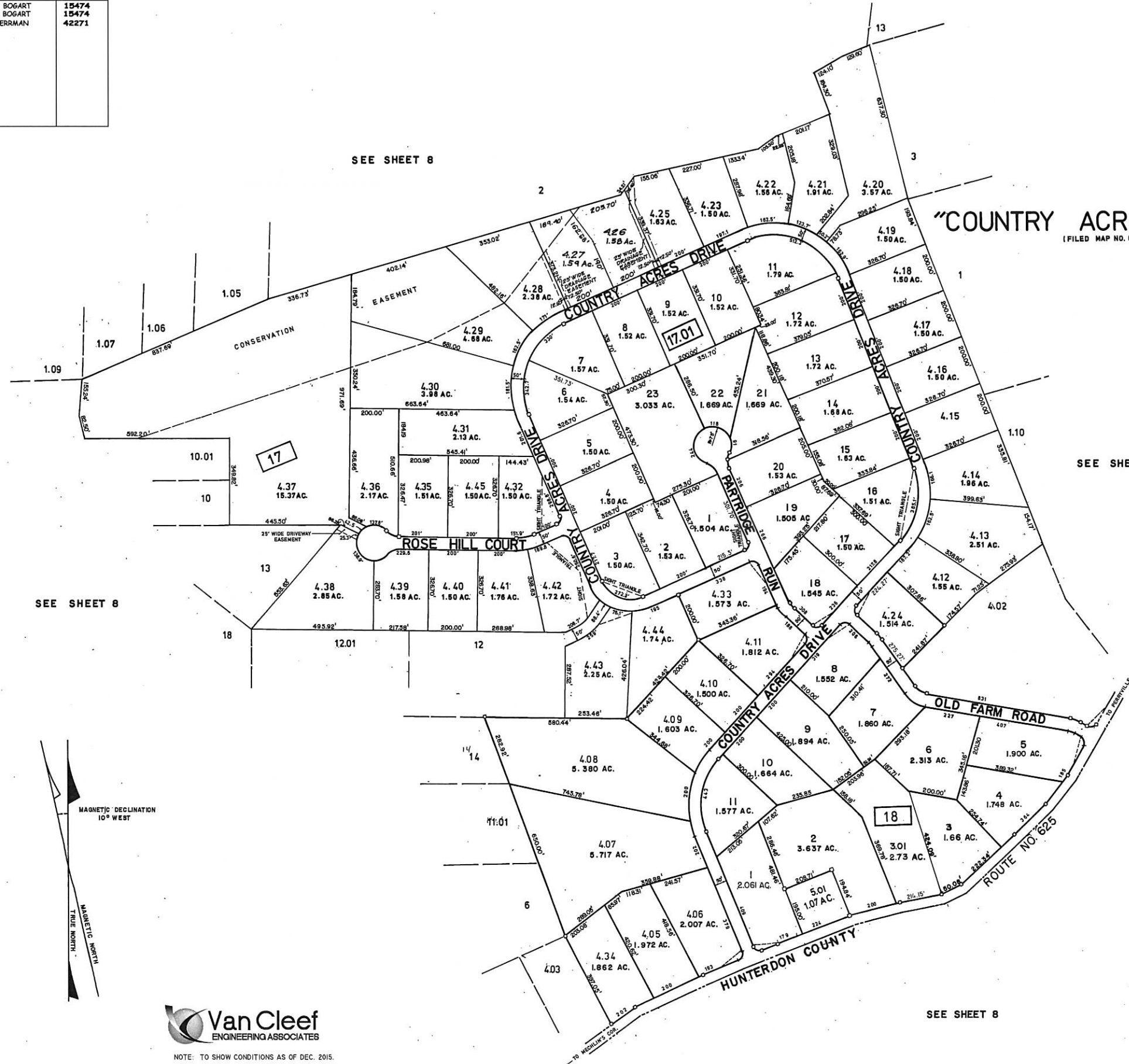


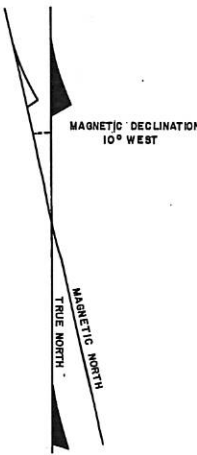
REVISIONS		
DATE	NAME	NO.
DEC 13, 2004	ROBERT C. BOGART	15474
DEC. 3, 2005	ROBERT C. BOGART	19474
DEC. 2015	CARL M. HERRMAN	42271



"COUNTRY ACRES II & III UNION"
 (FILED MAP NO. 682)

SEE SHEET 8

SEE SHEET 8



Van Cleaf
 ENGINEERING ASSOCIATES

NOTE: TO SHOW CONDITIONS AS OF DEC. 2015.

ROBERT C. BOGART & ASSOCIATES
 REVISED: 2/1/88 11/2/93



TAX MAP
 UNION TOWNSHIP
 HUNTERDON COUNTY, NEW JERSEY
 SCALE 1" = 200'

PREPARED BY
Frank W. Bokren, P.E.
 32 CHURCH ST., FLEMINGTON, N.J.

REVISIONS: 12/31/78, 12/31/79, 10/7/80, 10/26/81, 11/82

SEE SHEET 8