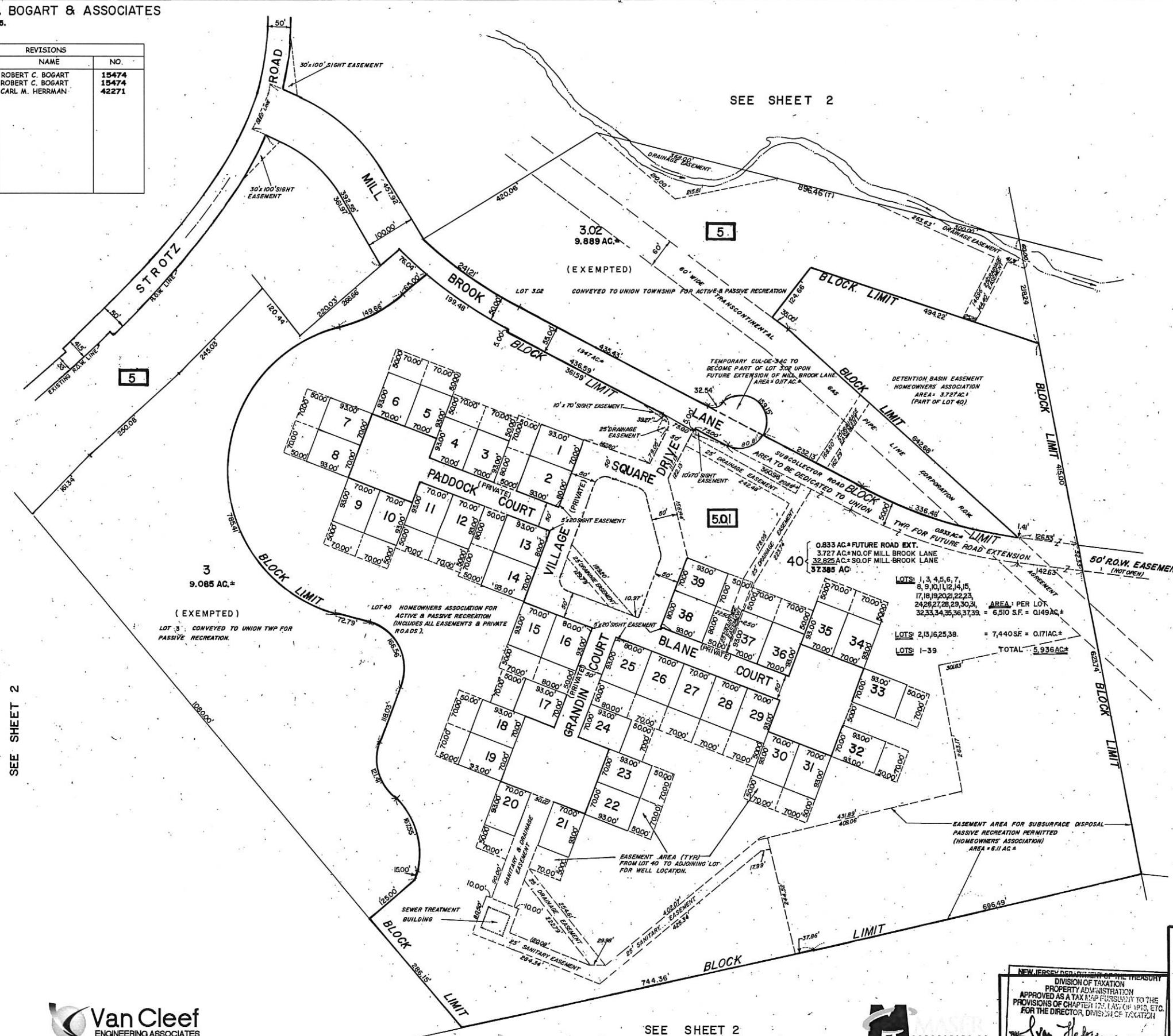


ROBERT C. BOGART & ASSOCIATES  
REVISED: 8/1/95.

REVISIONS		
DATE	NAME	NO.
DEC 13, 2004	ROBERT C. BOGART	15474
DEC 3, 2005	ROBERT C. BOGART	15474
DEC. 2015	CARL M. HERRMAN	42271



SEE SHEET 2

SEE SHEET 2

SEE SHEET 2



NOTE: TO SHOW CONDITIONS AS OF DEC. 2015

NEW JERSEY DEPARTMENT OF THE TREASURY  
DIVISION OF TAXATION  
PROPERTY ADMINISTRATION  
APPROVED AS A TAX MAP PURSUANT TO THE  
PROVISIONS OF CHAPTER 175, LAW OF APRIL 19, 1995,  
FOR THE DIRECTOR, DIVISION OF TAXATION

*Carl M. Herrman* P.E. & L.S.  
L.C. #16434, Chief Engineering Section  
DATE: JUL 18 1995 SERIAL NO. 218

**TAX MAP**  
UNION TOWNSHIP  
HUNTERDON COUNTY, NEW JERSEY  
SCALE: 1"=100'  
AUGUST 1995

ROBERT C. BOGART, P.E. & P.L.S.  
ROBERT C. BOGART AND ASSOCIATES  
82 MAIN STREET  
FLEMINGTON, NEW JERSEY  
TO SHOW CONDITIONS AS OF AUG. 1995