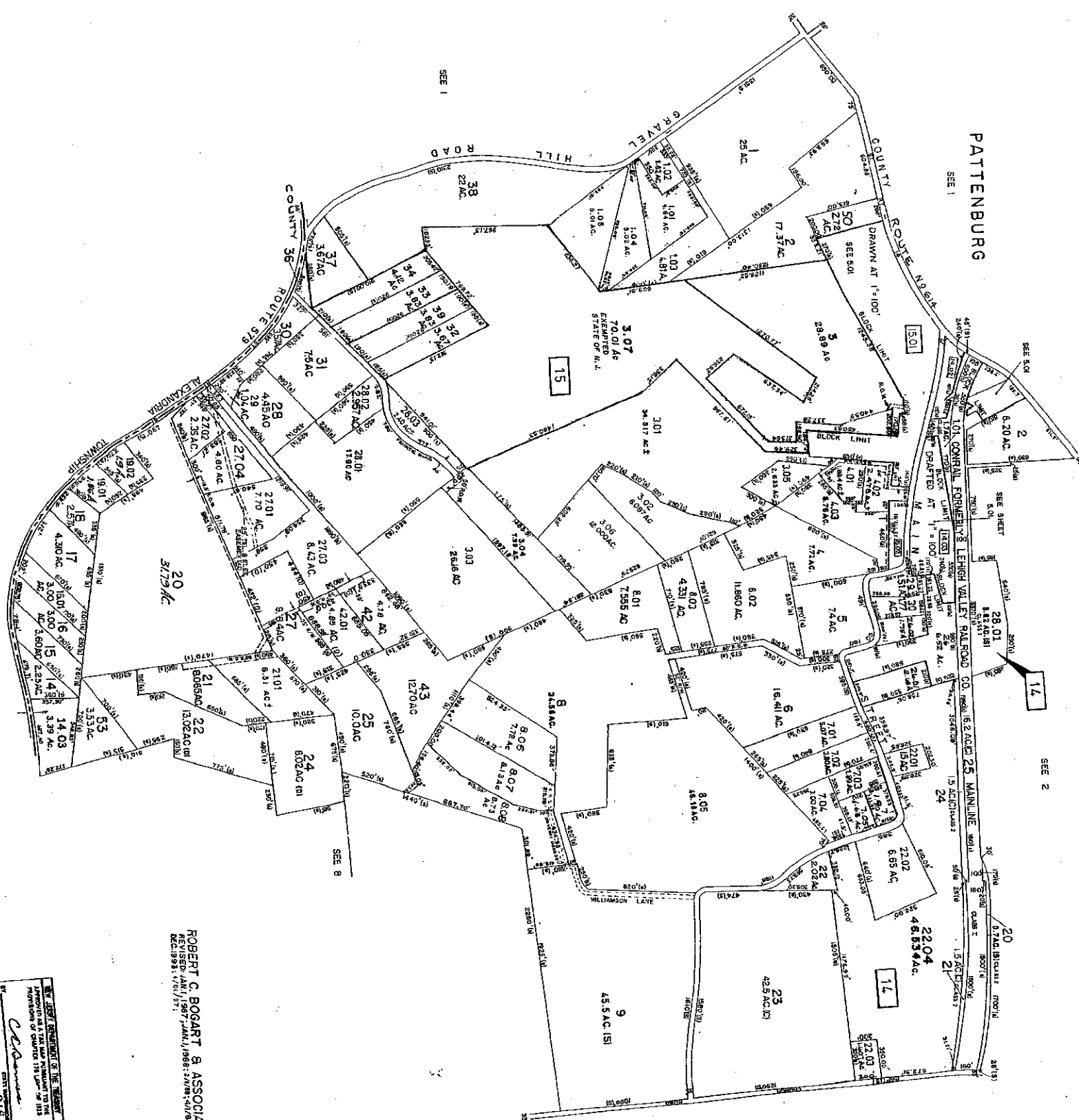


NO.	PLAT
15474	15474
15475	15475
15476	15476
15477	15477
15478	15478
15479	15479
15480	15480



ROBERT C BOGART & ASSOCIATES
 ENGINEERS AND SURVEYORS
 1500 N. 10TH ST. SUITE 200
 PHILADELPHIA, PA. 19107
 TEL: 215-381-1111

THIS MAP IS A REPRODUCTION OF THE ORIGINAL
 MAP OF THE TOWNSHIP OF UNION, NEW JERSEY,
 AS SHOWN ON THE TAX MAP FOR THE YEAR 1956.
 THE ORIGINAL MAP IS ON FILE IN THE OFFICE OF
 THE TOWNSHIP CLERK, UNION TOWNSHIP, NEW JERSEY.
 DATE: 11/1956

TAX MAP
 UNION TOWNSHIP
 HUNTERDON COUNTY, NEW JERSEY
 SCALE 1:400' NOVEMBER 1956
 KEystone MAPping CO.
 1434 N. 10th St.
 YORK, PENNSYLVANIA