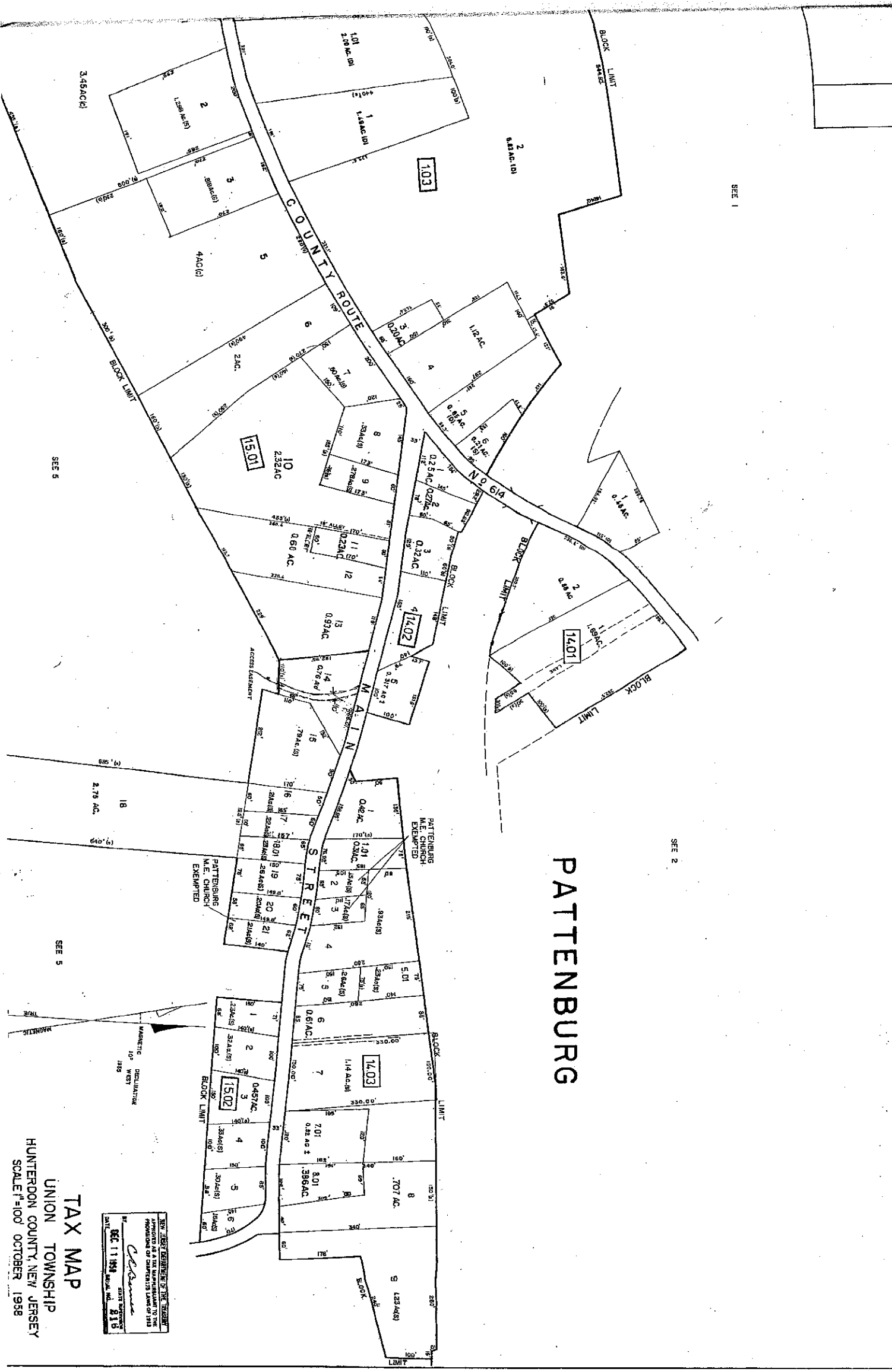


REVISIONS	NO.	DATE
1	15774	12/27/74
2	15774	12/27/74
3	15774	12/27/74



SEE 1

SEE 5

SEE 2

SEE 5

PATTENBURG

NEW JERSEY DEPARTMENT OF TREASURY
 APPROVED AS A TAX MAP PURSUANT TO THE
 PROVISIONS OF CHAPTER 176 LAWS OF 1953

James

DEC 11 1958 STATE OF NEW JERSEY
 DIVISION OF TAXATION

TAX MAP
 UNION TOWNSHIP
 HUNTERDON COUNTY, NEW JERSEY
 SCALE 1"=100' OCTOBER 1958