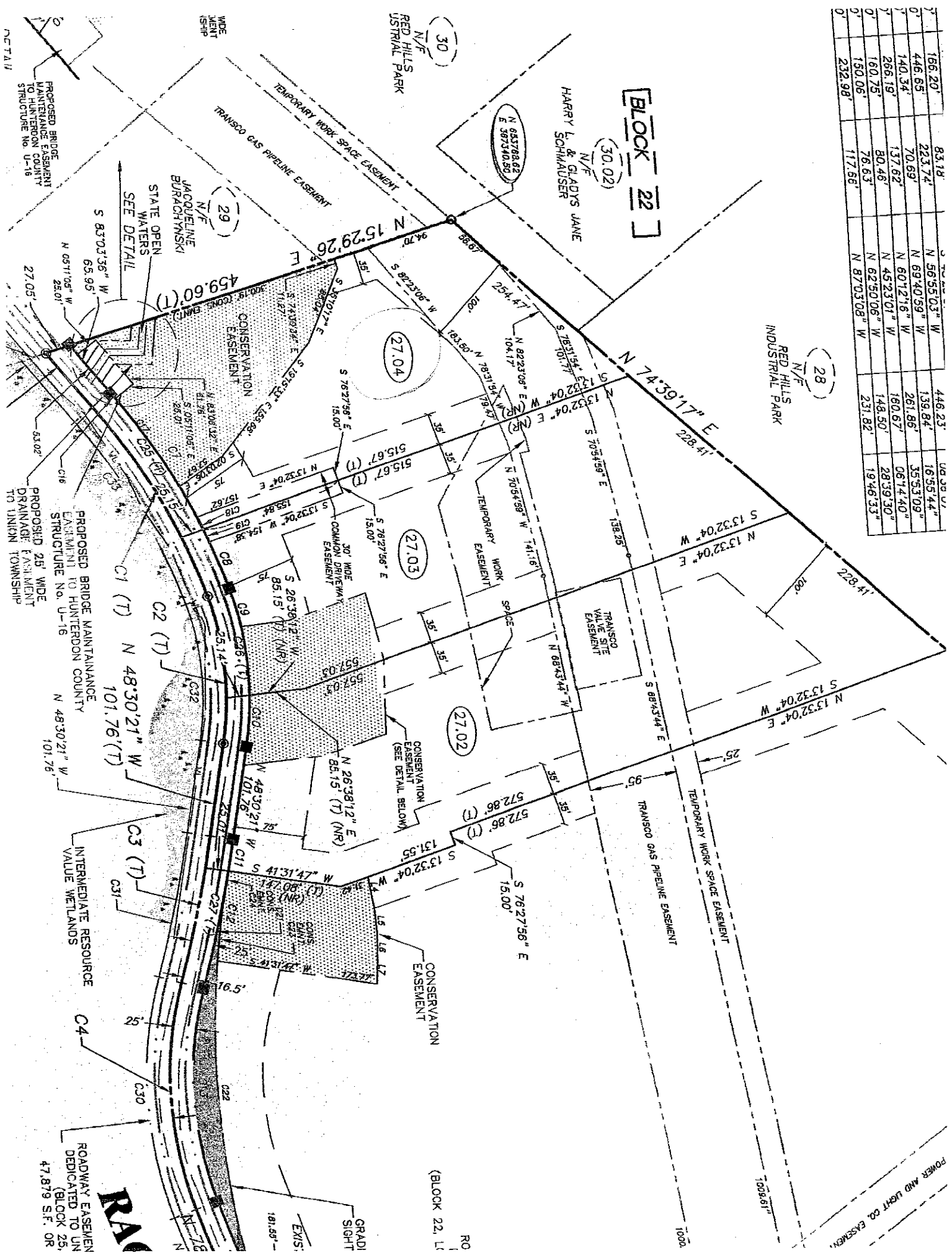


1	166.20'	83.18'	272.82'	448.23'	483.97'
2	446.65'	223.74'	N 56°55'03" W	139.84'	163.544'
3	140.34'	70.69'	N 69°40'59" W	35.5309'	
4	266.19'	137.62'	N 60°12'16" W	261.86'	0671440'
5	160.75'	80.46'	N 45°23'01" W	160.67'	2839.30'
6	150.05'	76.63'	N 62°50'06" W	148.50'	1946.33'
7	232.98'	117.66'	N 87°03'08" W	231.82'	



Block 22

HARRY L & GLADYS JANE SCHMAUSER

RED HILLS INDUSTRIAL PARK

RED HILLS INDUSTRIAL PARK

JACQUELINE BURACKI STATE OPEN WATERS SEE DETAIL

PROPOSED BRIDGE MAINTENANCE EASEMENT TO HUNTERDON COUNTY STRUCTURE No. U-16

INTERMEDIATE RESOURCE VALUE WETLANDS

ROADWAY EASEMENT DEDICATED TO UN (BLOCK 25, 47,879 S.F. OR

RAV

NCT-111

RO (BLOCK 22, LI

POWER AND LIGHT CO. EASEMENT