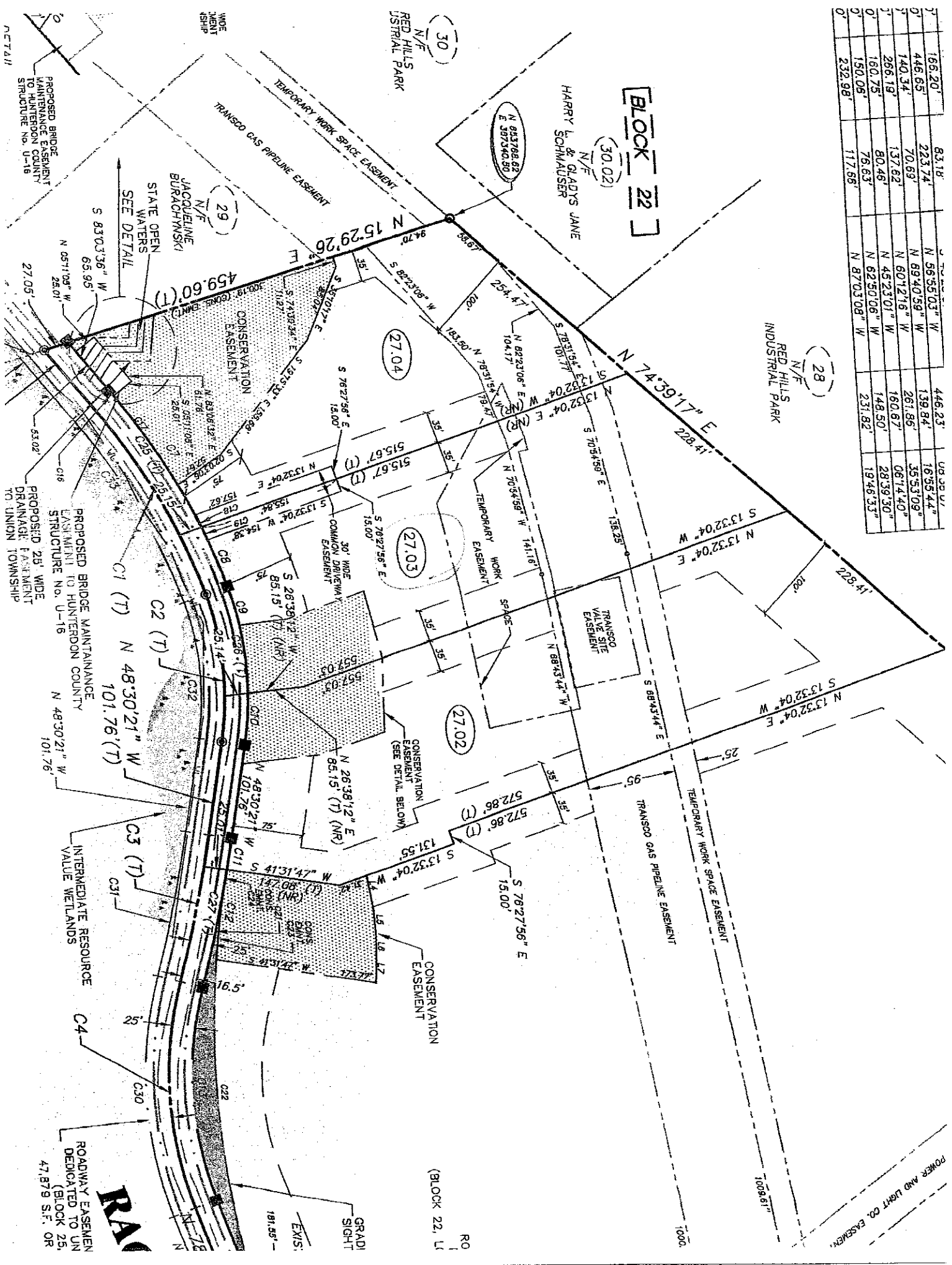


166.20'	83.18'	N 56.55'03" W	446.23'	08.29.47"
446.65'	223.74'	N 69.40'59" W	139.84'	16.55.44"
140.34'	70.63'	N 60.12'16" W	261.86'	35.53.09"
266.19'	137.62'	N 45.23'01" W	160.67'	06.14.40"
0'	160.75'	N 62.50'06" W	148.50'	28.39.30"
0'	150.06'	N 87.03'08" W	231.82'	19.46.33"
0'	232.98'		117.86'	



Block 22

(30.02)

(28)

(27.04)

(27.03)

(27.02)

RA

CT 111

PROPOSED BRIDGE MAINTENANCE EASEMENT TO HUNTERDON COUNTY STRUCTURE NO. U-16

PROPOSED BRIDGE MAINTENANCE EASEMENT TO HUNTERDON COUNTY STRUCTURE NO. U-16

INTERMEDIATE RESOURCE VALU WETLANDS

ROADWAY EASEMENT DEDICATED TO UN (BLOCK 25, 47.879 S.F. OR

JACQUELINE BURACHYNSKI STATE OPEN WATERS SEE DETAIL

(29)

TRANSPO GAS PIPELINE EASEMENT

TEMPORARY WORK SPACE EASEMENT

CONSERVATION EASEMENT

COMMON DRIVEWAY EASEMENT

CONSERVATION EASEMENT (SEE DETAIL BELOW)

CONSERVATION EASEMENT

CONSERVATION EASEMENT

CONSERVATION EASEMENT

CONSERVATION EASEMENT

CONSERVATION EASEMENT

CONSERVATION EASEMENT

CONSERVATION EASEMENT

CONSERVATION EASEMENT

CONSERVATION EASEMENT

CONSERVATION EASEMENT

CONSERVATION EASEMENT

CONSERVATION EASEMENT

(30)

N/F RED HILLS INDUSTRIAL PARK

HARRY & GLADYS JANE SCHMAUSER

(30.02)

N 15.29.26

N 74.39.17 E

N 13.32.04 E

N 13.32.04 E

N 13.32.04 E

N 13.32.04 E

N 13.32.04 E

N 13.32.04 E

N 13.32.04 E

N 13.32.04 E

N 13.32.04 E

N 13.32.04 E

N 13.32.04 E

N 13.32.04 E

N 13.32.04 E

N 13.32.04 E

N 13.32.04 E

N 13.32.04 E

N 13.32.04 E

N 13.32.04 E