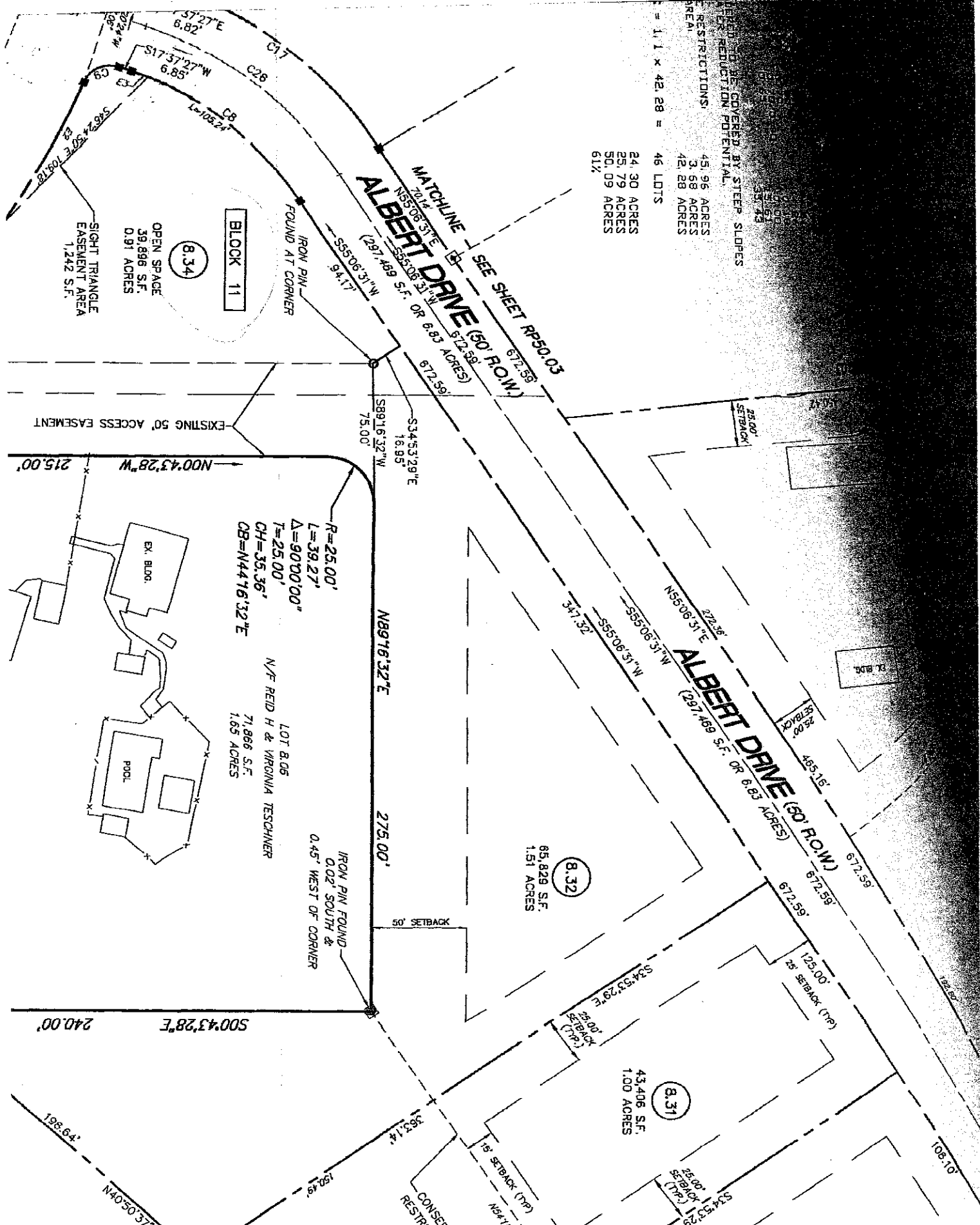


24.30 ACRES
25.79 ACRES
50.09 ACRES
61%

RESTRICTIONS:
45.96 ACRES
3.68 ACRES
42.28 ACRES
= 1.1 x 42.28 = 46 LOTS

NEED TO BE COVERED BY STEEP SLOPES
TO REDUCE DEVELOPMENT POTENTIAL.



25.79
3.68
42.28

OPEN SPACE
39,896 S.F.
0.91 ACRES

SIGHT TRIANGLE
EASEMENT AREA
1,242 S.F.

BLOCK 11

8.32

8.31

65,829 S.F.
1.51 ACRES

43,406 S.F.
1.00 ACRES

MATCHLINE SEE SHEET RP50.03
ALBERT DRIVE (60' R.O.W.)

ALBERT DRIVE (60' R.O.W.)

R=25.00'
L=39.27'
Δ=90°00'00"
T=25.00'
CH=35.36'
CB=N44°16'32\"/>

LOT 8.06
N/F REID H & VIRGINIA TESSCHNER
71,866 S.F.
1.65 ACRES

IRON PIN FOUND
0.02' SOUTH &
0.45' WEST OF CORNER

EXISTING 50' ACCESS EASEMENT

CONSERV
RESTRY

25.00'
SETBACK

25.00'
SETBACK

25.00'
SETBACK

25.00'
SETBACK

25.00'
SETBACK

25.00'
SETBACK

25.00'
SETBACK

25.00'
SETBACK

25.00'
SETBACK

25.00'
SETBACK

25.00'
SETBACK

25.00'
SETBACK

25.00'
SETBACK

25.00'
SETBACK

25.00'
SETBACK

25.00'
SETBACK

25.00'
SETBACK

240.00'

S00°43'28\"/>

275.00'

N89°16'32\"/>

75.00'

S89°16'32\"/>

S55°06'31\"/>

6.85'

6.82'

6.82'

6.85'

6.85'

6.85'

6.85'

240.00'

198.64'

N40°50'37\"/>

N63°14\"/>

N54°15\"/>

150.48'

150.48'

150.48'

150.48'

150.48'

150.48'

150.48'

150.48'

150.48'

150.48'

150.48'

150.48'

150.48'

150.48'

150.48'

150.48'

150.48'

150.48'

150.48'

150.48'

150.48'

150.48'

150.48'

150.48'

150.48'

150.48'

150.48'

150.48'

150.48'

150.48'

150.48'

150.48'

150.48'

150.48'

150.48'

150.48'

150.48'

150.48'

150.48'

150.48'

150.48'

150.48'

150.48'

150.48'

150.48'

150.48'

150.48'

150.48'

150.48'

150.48'

150.48'

150.48'

150.48'

150.48'

150.48'

150.48'

150.48'

150.48'

150.48'

150.48'

150.48'

150.48'

150.48'

150.48'

150.48'

150.48'

150.48'

150.48'

150.48'

150.48'

150.48'

150.48'

150.48'

150.48'

150.48'

150.48'

150.48'

150.48'

150.48'

150.48'

150.48'

150.48'

150.48'

150.48'

150.48'

150.48'

150.48'

150.48'

150.48'

150.48'

150.48'

150.48'

150.48'

150.48'

150.48'

150.48'

150.48'

150.48'

150.48'

150.48'

150.48'

150.48'

150.48'

150.48'

150.48'

150.48'

150.48'

150.48'

150.48'

150.48'

150.48'

150.48'

150.48'

150.48'

150.48'

150.48'

150.48'

150.48'

150.48'

150.48'

150.48'

150.48'

150.48'

150.48'

150.48'

150.48'

150.48'

150.48'

150.48'

150.48'

150.48'

150.48'

150.48'

150.48'

150.48'

150.48'

150.48'

150.48'

150.48'

150.48'

150.48'

150.48'

150.48'

150.48'

150.48'

150.48'

150.48'

150.48'

150.48'

150.48'