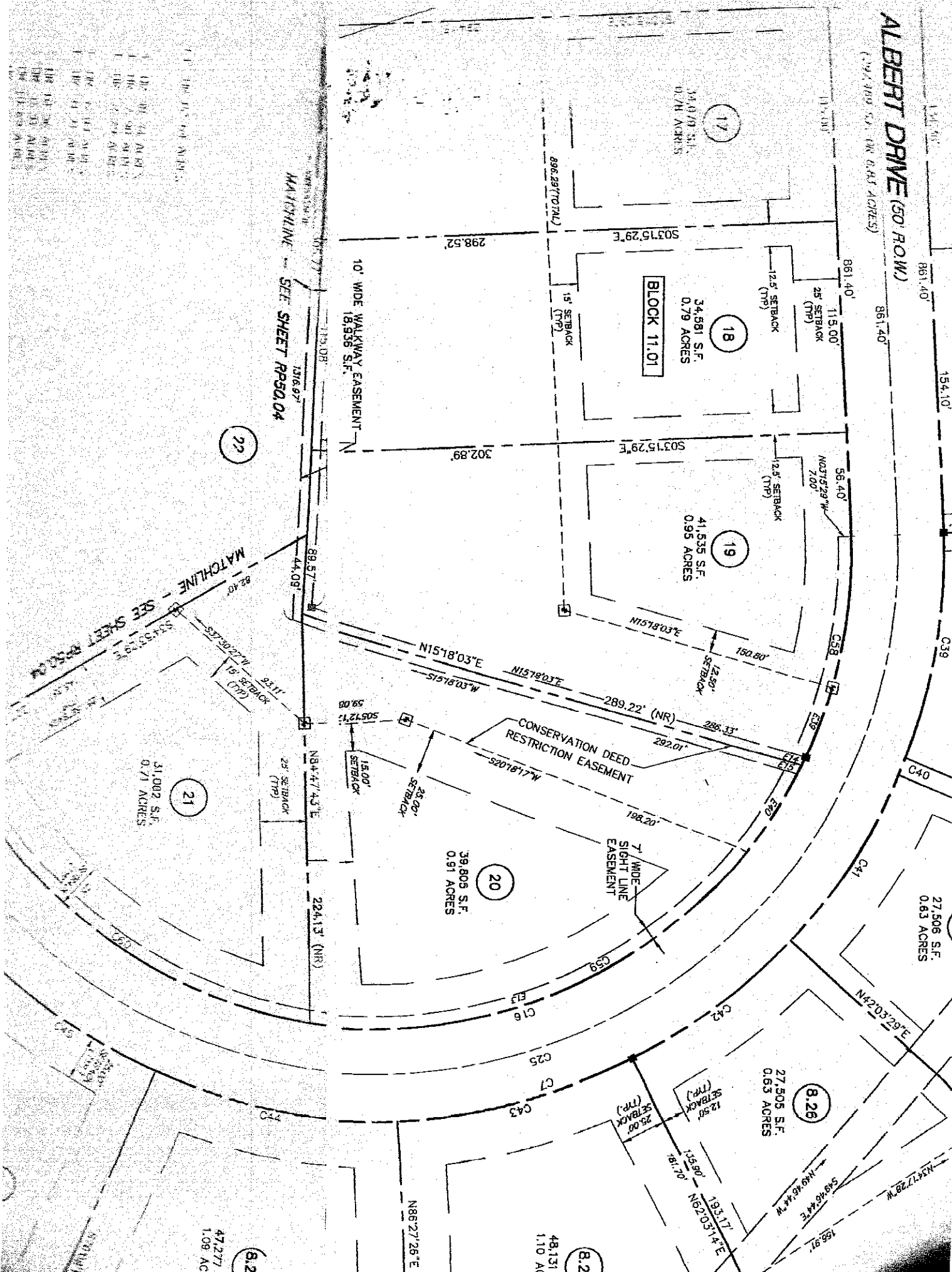


ALBERT DRIVE (50' ROW)

(29,700 S.F. OR 0.67 ACRES)



17
34,078 S.F.
0.771 ACRES

18
34,581 S.F.
0.79 ACRES
BLOCK 11.01

19
41,535 S.F.
0.95 ACRES

20
39,808 S.F.
0.91 ACRES

21
31,002 S.F.
0.71 ACRES

8.26
27,505 S.F.
0.63 ACRES

8.27
48,131 S.F.
1.10 ACRES

8.28
47,277 S.F.
1.08 ACRES

MATCHLINE - SEE SHEET RP50.04

MATCHLINE - SEE SHEET RP50.05

- 1. THE 15' SETBACK
- 2. THE 15' SETBACK
- 3. THE 15' SETBACK
- 4. THE 15' SETBACK
- 5. THE 15' SETBACK
- 6. THE 15' SETBACK
- 7. THE 15' SETBACK
- 8. THE 15' SETBACK
- 9. THE 15' SETBACK
- 10. THE 15' SETBACK
- 11. THE 15' SETBACK
- 12. THE 15' SETBACK
- 13. THE 15' SETBACK
- 14. THE 15' SETBACK
- 15. THE 15' SETBACK